

# SV110 & SV111

## Vibration Calibrators



INSTRUMENTATION FOR SOUND & VIBRATION MEASUREMENTS

# SV110 Hand-Held Vibration Calibrator

## Features

SV110 is hand-held vibration field calibrator designed in accordance to **ISO 8041** for in-situ checks of hand-arm vibration meters.

The calibrator operates on two frequencies **80 Hz and 160 Hz** enabling in-situ checks of hand-arm vibration meters as well as machine vibration meters.

Titanium shaking table and **POWERFUL SHAKER** enable calibration of sensors with mass up to 300 g at 80 Hz.

The inbuilt **RECHARGEABLE** battery typically provides enough power for 12 hours of continuous operation.

\*Sensors shown on photos are not included in the kit.



Two conveniently located **LED DIODES** show the current status during the calibration process.

The calibrator aluminum housing is **ROBUST** and additionally protected with rubber covers on both ends.

The **LEATHER COVER** gives comfort of a secure grip to the user.

The calibrator is simple in use. It has three **PUSH-BUTTONS** for selection of frequency and amplitude and start/stop control.

The **OLED** graphical screen displays information on selected frequency and vibration level.

## About

The SV110 is a hand-held vibration calibrator designed for on-site checks of hand-arm vibration meters in accordance to ISO 8041 both at 80 Hz and 160 Hz. The menu is simply operated by three push-buttons and a small OLED display. Depending on a chosen frequency, a user may select a calibration range from 1 m/s<sup>2</sup> to 10 m/s<sup>2</sup>.

The SV110 is a perfect solution for calibration checks of hand-arm vibration meters including Svantek's SV103 and SV106. Following the requirements of ISO 8041, the calibrator's built-in tri-axial reference accelerometer measures the cross-axis (transverse) vibrations to detect any interference to the calibration signal. Faults caused by transverse vibrations are indicated by LED on the

calibrator's housing. This unique solution ensures stability of both calibration level & frequency, independent from the mass of the test object.

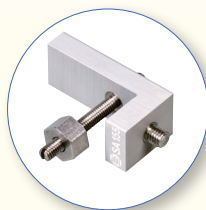
A small size of the SV110 makes it very useful for calibration checks of various types of machine vibration accelerometers. The calibrator menu provides selection between both metric systems 'g' and 'm/s<sup>2</sup>' as well as choice of frequency unit between Hertz (Hz) and Cycle Per Minute (CPM). Accelerometers are conveniently attached using a mounting stud, a mounting disc or a dedicated adapter.

The calibrator has a built-in rechargeable batteries that typically power it for 12 hours of continuous operation.

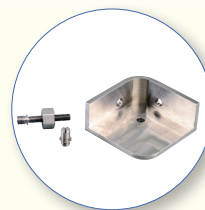
## Optional accessories



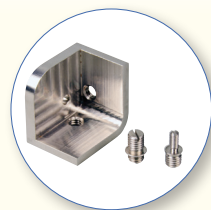
SA105A  
Calibration  
Adapter to  
SV105A, SV105AF  
and SV107  
Accelerometers



SA155  
Calibration  
Adapter to SV150  
and SV151  
Accelerometers



SA40  
Calibration  
Adapter to  
SV3233A  
Accelerometer



SA44  
Calibration  
Adapter to SV50  
Accelerometer

# SV111 Vibration Calibrator

## Features

SV111 is a vibration field calibrator designed in accordance to **ISO 8041** for in-situ checks of whole-body and hand-arm vibration meters.

Calibrator is suitable for all types of vibration transducers for **ACCELERATION, VELOCITY AND DISPLACEMENT** at 15.92 Hz; 79.6 Hz; 159.2 Hz and 636.6 Hz

The shaker can be loaded with maximum payload of **1 kg at 15.92 Hz** enabling calibration of a complete seat-pad or building vibration sensors.

The inbuilt **RECHARGEABLE** battery provides up to 20 hours of continuous operation.

The **OLED** colour graphical screen displays information on selected frequency and vibration level.

The calibrator is simple in use. It has three **PUSH-BUTTONS** for selection of frequency and amplitude and start/stop control.

The **INBUILT REFERENCE TRANSDUCER** detects errors during calibration process and ensures calibration stability.



\*Sensors shown on photos are not included in the kit.

## About

The SV111 vibration calibrator is designed for in-situ checks in accordance with the ISO 8041 standard. The device is intended for operation in the field to check that an instrument is working correctly. The calibrator is based on a built-in tri-axial reference accelerometer and computer-controlled shaker. In accordance with ISO 8041 requirements the reference accelerometer will measure cross-axes / transverse vibrations to detect any interference to the calibration signal. Three LEDs will light up on the calibrator panel whenever a fault caused by transverse vibrations is detected. This unique feature ensures the stability of the calibration level & frequency independently of the object being tested. The SV111 is designed to calibrate a variety of vibration meters at different frequencies from 16 Hz up to 640 Hz.

Depending on the frequency selected, the user may choose the level of calibration from 1 m/s<sup>2</sup> to 10 m/s<sup>2</sup>.

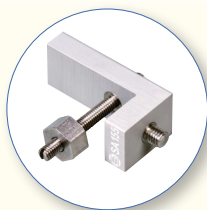
The shaker can be loaded with up to 1 kilogram. Any improper object fixing is automatically detected and indicated by LEDs on the control panel giving information about the axis that needs correcting.

A set of adapters is available for calibration checks on tri-axial sensors including a special adapter for Svantek whole-body sensors (seat-pads), which can be directly mounted onto the shaker. Other types of vibration transducers can be easily attached using a mounting stand, a mounting disc or adapter.

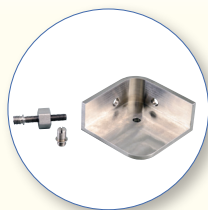
## Optional accessories



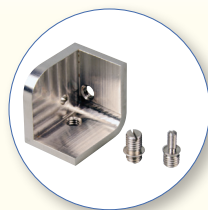
SA105A  
Calibration  
Adapter to  
SV105A  
Accelerometer



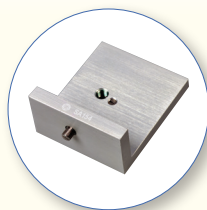
SA155  
Calibration  
Adapter to SV150  
and SV151  
Accelerometers



SA40  
Calibration  
Adapter to  
SV3233A  
Accelerometer



SA44  
Calibration  
Adapter to SV50  
Accelerometer



SA154  
Calibration  
Adapter to SV84  
Accelerometer



# Technical Specifications



**SV 110**



\*Sensors shown on photos are not included in the kit.

**SV 111**

## CALIBRATION SIGNAL PARAMETERS

Vibration Accelerations (RMS in $m/s^2$ )	1; 2; 3; 4; 5; 6; 7; 8; 9; 10 (at 79.58 Hz) 1; 2; 3; 4; 5; 6; 7; 8; 9; 10 (at 159.2 Hz)	1 (at 15.92 Hz) 1; 2; 3; 4; 5; 6; 7; 8; 9; 10 (at 79.58 Hz) 1; 2; 3; 4; 5; 6; 7; 8; 9; 10 (at 159.2 Hz) 1 (at 636.6 Hz)
Vibration Velocities (RMS in mm/s)	2, 4, 6, 8, 10, 12, 14, 16, 18, 20 (at 79.58 Hz) 1; 2; 3; 4; 5; 6; 7; 8; 9; 10 (at 159.2 Hz)	10 (at 15.92 Hz) 2, 4, 6, 8, 10, 12, 14, 16, 18, 20 (at 79.58 Hz) 1; 2; 3; 4; 5; 6; 7; 8; 9; 10 (at 159.2 Hz) 0.25 (at 636.6 Hz)
Vibration Displacement (RMS in $\mu m$ )	4, 8, 12, 16, 20, 24, 28, 32, 36, 40 (at 79.58 Hz) 1; 2; 3; 4; 5; 6; 7; 8; 9; 10 (at 159.2 Hz)	100 (at 15.92 Hz) 4, 8, 12, 16, 20, 24, 28, 32, 36, 40 (at 79.58 Hz) 1; 2; 3; 4; 5; 6; 7; 8; 9; 10 (at 159.2 Hz) 0.0625 (at 636.6 Hz)
Amplitude Error	Less than $\pm 3\%$	Less than $\pm 3\%$
Frequency Error	Less than $\pm 0.5\%$	Less than $\pm 0.5\%$
Transverse Vibration	Less than 10% of the main direction	Less than 10% of the main direction
Harmonic Distortion	< 3 % (at 79.58 Hz) < 3 % (at 159.2 Hz)	< 5 % (at 15.92 Hz) < 3 % (at 79.58 Hz) < 3 % (at 159.2 Hz) < 3 % (at 636.6 Hz)

## GENERAL INFORMATION

Maximum Weight of Calibrated Object	300 grams (at 79.58 Hz) 200 grams (at 159.2 Hz)	1000 grams (at 15.92 Hz) 300 grams (at 79.58 Hz) 200 grams (at 159.2 Hz) 200 grams (at 636.6 Hz)
Sensor Mounting	Thread M5 x 6 mm	Thread M5 x 12 mm

## WORKING CONDITIONS

Temperature Range	-10 °C ÷ 50 °C	-10 °C ÷ 50 °C
Humidity Range	25% ÷ 85%	25% ÷ 85%

## POWER SUPPLY

Battery Type	Rechargeable 7.2 V / 2 Ah	Rechargeable 6 V / 12 Ah
Continuous Operating Time	up to 12 hours	Up to 20 hours
Automatic Switch Off		From 5 to 60 minutes adjustable
Charging Time	5 hours (with SA 54) or 10 hours (with USB)	Less than 10 hours
Power Supply for Charger	SA 54 (5V / 2A) or mini USB 500 mA HUB	15 W; 8÷24 V

## OVERALL WEIGHT AND DIMENSIONS

Weight	1200 g (incl. battery)	8.2 kg (incl. battery)
Dimensions	170 x 65 x 65 mm	395 x 270 x 194 mm

Our Company's policy is based upon continuous product development and innovation. Therefore, we reserve the right to change the specifications without any prior notice whatsoever.

Proudly distributed by:

**SVANTEK Sp. z o. o.**  
ul. Strzygłowska 81, 04-872 WARSAW, POLAND  
phone/fax (+48) 22 51 88 320, (+48) 22 51 88 312  
<http://www.svantek.com> e-mail: [office@svantek.com.pl](mailto:office@svantek.com.pl)